

RAHR - SERIES A

Horizontal High Performance Fan Coil Unit, Concealed with Plenum

Quick Reference Product Catalog

MODEL

- RAHR - SERIES A - Horizontal high performance fan coil unit, concealed with plenum

FEATURES

- Galvanized steel construction
- 1/2" thick fiberglass, foil faced, cellular insulation
- 1 1/2" duct discharge collar
- Four point hanger mounting brackets
- 1" and 2" pleated filters, MERV8 or MERV13
- Integral rear ducted return, field reversible to bottom return
- Bottom return or Mixing box with top/rear or rear/bottom dampers - field reversible
- Telescoping bottom panels (optional)

COILS

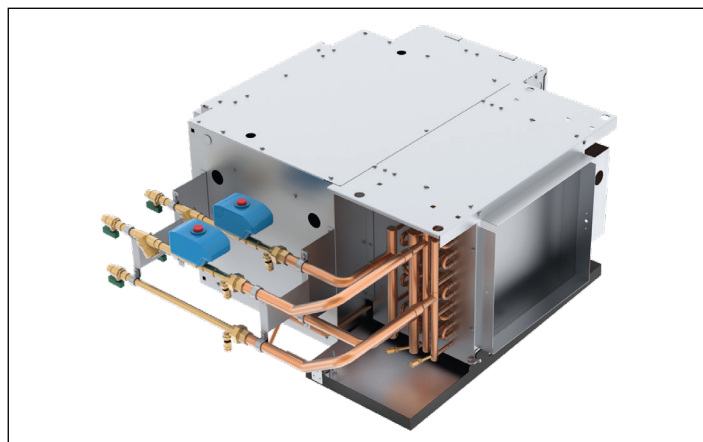
- Cooling - chilled water (3, 4 or 6-rows)
- Heating - hot water (1, 2, 3 or 4-row) or steam (1 or 2-row), reheat or preheat position
- 8 total rows of cooling and heating coils maximum
- 3/8" O.D. seamless copper tubes (0.012" tube wall thickness)
- 1/2" O.D. seamless copper tubes (0.016" or 0.025" tube wall thickness)
- Stainless steel coil casing (optional)
- High efficiency aluminum fin surface available in 10 and 12 fpi
- Left or right hand coil connections
- Manual air vents and Automatic air vents (optional)

DRAIN PANS

- Single wall, galvanized steel, externally insulated – fire retardant and antimicrobial closed cell foam, also Stainless steel (optional)
- Positively sloped to drain connection
- Condensate overflow switch and/or condensate pump (optional)
- 7/8" ODM copper outlet primary drain pan; stainless steel drain pan has 3/4" MPT galvanized steel outlet
- 5/8" ODM copper auxiliary drain outlet; stainless steel pan is 3/8" MPT galvanized steel
- auxiliary drain pan

FAN/MOTOR ASSEMBLIES

- Forwardly curved, DWDI centrifugal type
- 115, 208-230, 220 & 277V, 1-phase, 3-speed PSC motors
- 115, 208-230, 220 & 277V, 1-phase EC motors in one of three options (3-speed fixed, adjustable, and 2-10V control)
- Quick disconnect motor connections
- Removable fan/motor deck for service



ELECTRICAL

- Electrical junction box for field wiring terminations
- Terminal block for field connections
- Unit and remote mounted three speed fan switches (optional)
- Automatic reset primary and back-up secondary thermal limits
- Electrical enclosure with hinged bottom access door and removable side access panel
- SCR fan speed controller, only for high speed (optional)
- Main fusing (optional)
- Disconnect switch, toggle, or door interlocking (optional)
- Silent electric heat relays and fan relay (optional)
- Discharge air sensors

PIPING PACKAGES

- Factory assembled, shipped loose or pre-installed
- 1/2", 3/4", or 1" piping size
- 2-way and 3-way 2 position close off, modulating floating point and proportional valves
- Isolation ball valves with memory stop
- Fixed and adjustable flow control devices
- Unions and P/T ports
- Remote mounted digital display and programmable thermostats

CERTIFICATIONS

- cETL Listed - Adherence to UL 60335 certification
- AHRI 440 certified performance data

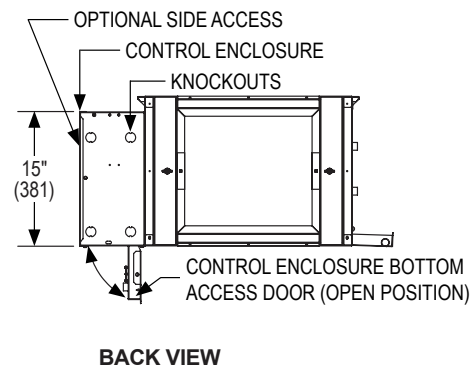
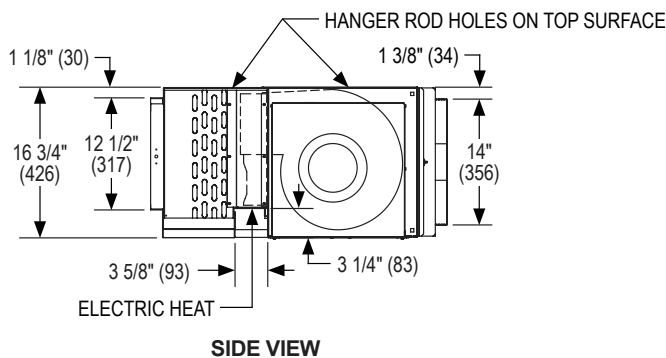
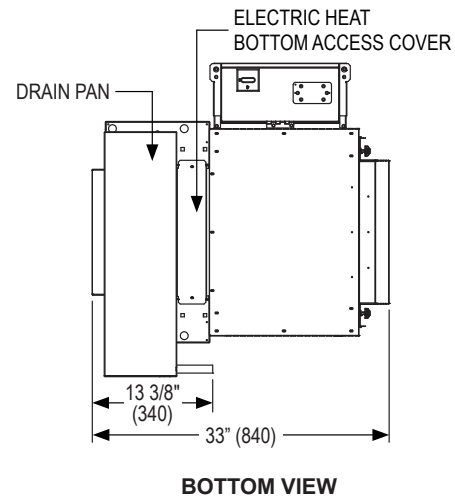
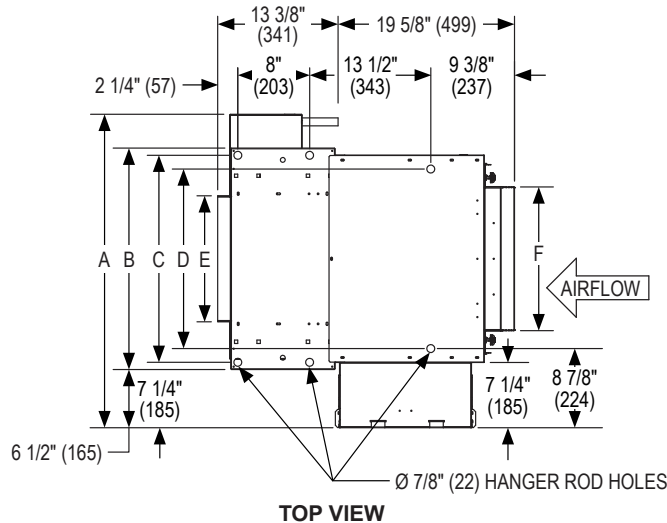
WEB SEARCH: **RAHR**

RAHR - SERIES A

Horizontal High Performance Fan Coil Unit, Concealed with Plenum

Quick Reference Product Catalog

DIMENSIONAL DATA



NOTES: Dimensions in parentheses are in millimeters (mm). See table below for dimensional references. The mixing box is field reversible from bottom to top and rear return. It is recommended to provide 3" access on pipe connection side. Provide access clearance for electrical enclosure per local and national electrical code requirements. Mixing box side panels are removable for access to the linkage / actuator.

PERFORMANCE AND DIMENSIONAL DATA

Size	Performance			Dimensions					
Unit Size	CFM Range	Total Cooling Capacity Range (MBH)	Heating Capacity Range (MBH)	A	B	C	D	E	F
06	657-706	11.0 - 22.0	25.3 - 43.3	34 7/8" (886)	24 5/8" (721)	23 1/8" (587)	20" (508)	14" (356)	16" (406)
08	903 - 978	14.9 - 22.9	33.3 - 59.9	39 7/8" (1013)	29 5/8" (737)	28 1/8" (714)	25" (635)	19" (483)	21" (533)
10	924 - 1006	16.8 - 32.8	37.6 - 65.7	43 7/8" (1114)	33 5/8" (838)	32 1/8" (816)	29" (737)	23" (584)	25" (635)
12	1397 - 1546	28.1 - 45.6	50.8 - 112.5	48 7/8" (1241)	38 5/8" (965)	37 1/8" (943)	34" (864)	28" (711)	30" (762)
14	1734 - 1856	26.9 - 55.7	61.9 - 106.5	53 7/8" (1368)	43 5/8" (1092)	42 1/8" (1070)	39" (991)	33" (838)	35" (889)
16	1919 - 2102	33.2 - 61.8	69.3 - 154.3	58 7/8" (1495)	48 5/8" (1219)	47 1/8" (1197)	44" (1118)	38" (965)	40" (1016)
18	1923 - 2138	33.6 - 65.7	74.6 - 132.0	63 7/8" (1622)	53 5/8" (1346)	52 1/8" (1324)	49" (1245)	43" (1092)	45" (1143)
20	1994 - 2128	41.0 - 68.7	79.1 - 136.5	67 7/8" (1724)	57 5/8" (1448)	56 1/8" (1426)	53" (1346)	47" (1194)	49" (1245)

NOTES: Information shown is abbreviated. See website for complete information. Data is based on 115/1/60 adjustable speed EC motor on high fan speed with 0.05" ESP. Cooling coil: 75°F DB and 63°F WB EAT, 45°F EWT, 55°F LWT. Heating coil: 70°F DB EAT, 180°F EWT, 160°F LWT. CFM and coil performance ranges will vary depending on coil combination selected.